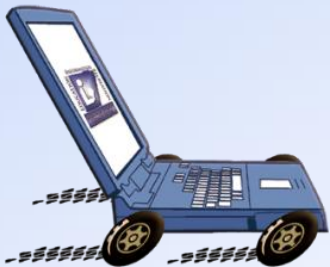


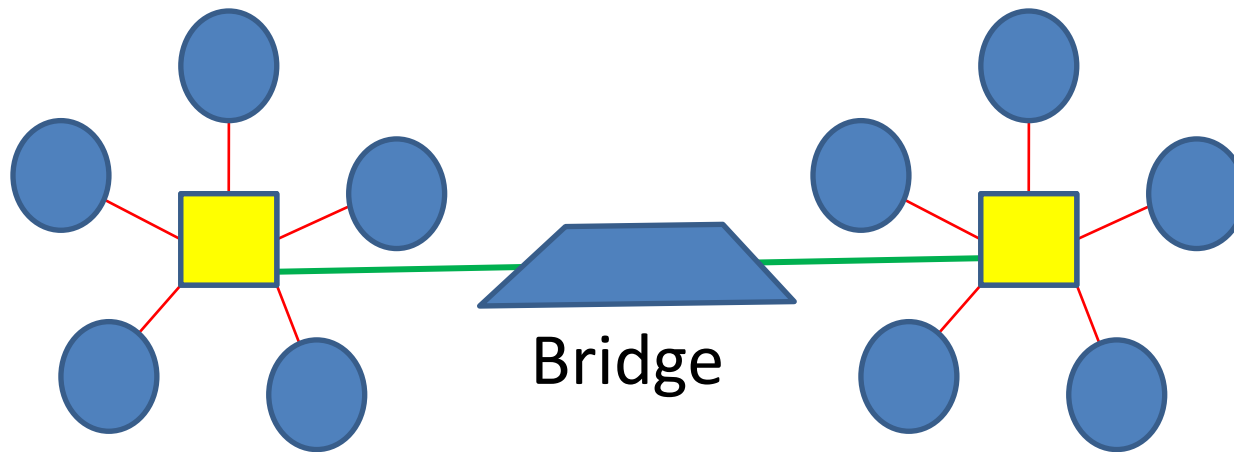
# Interconnected Networks



**YOUR MONROE COUNTY  
LIBRARY SYSTEM**

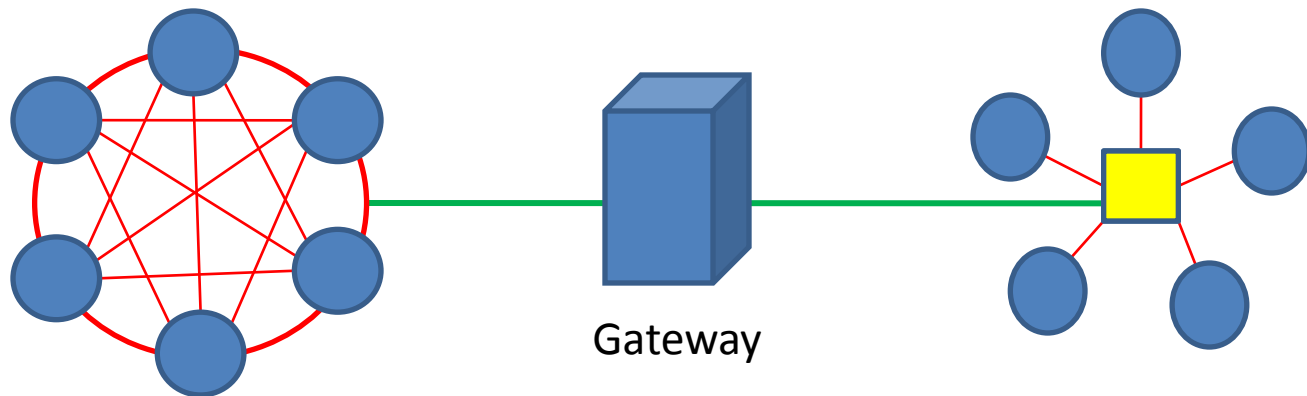
<http://monroe.lib.mi.us>

# Using a Bridge



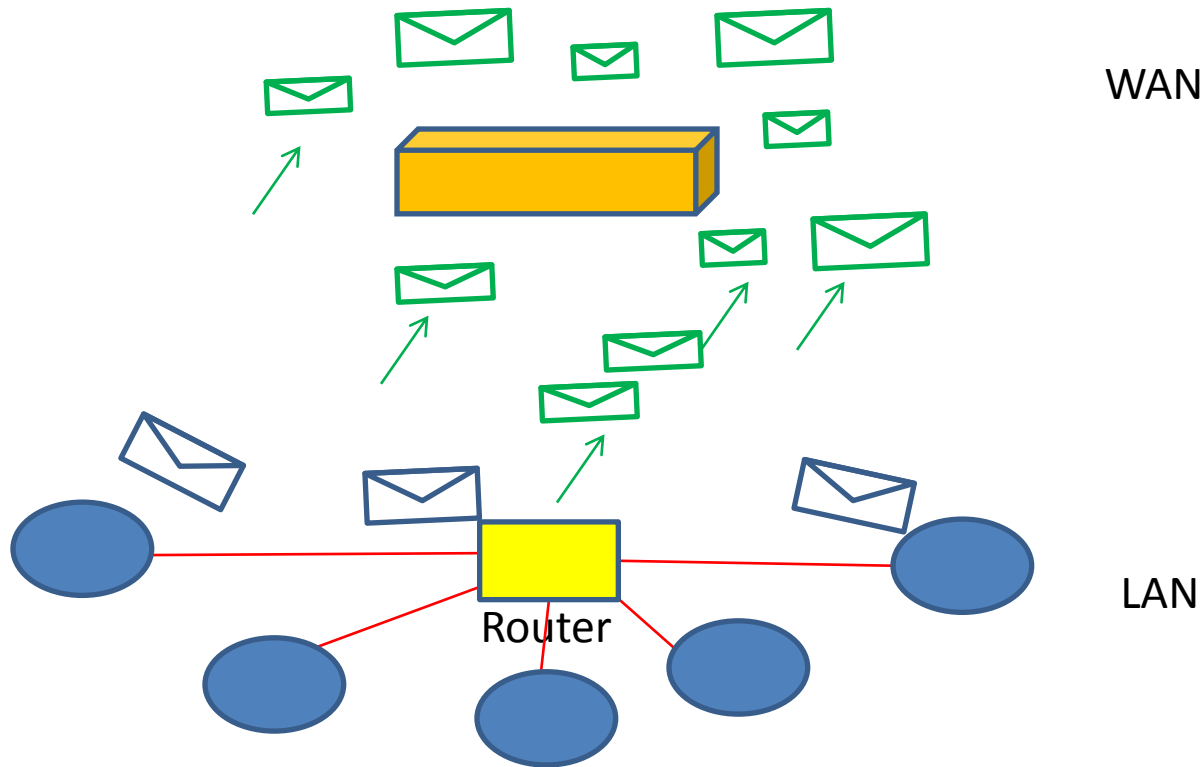
Transfers data without regard to format between **similar** networks

# Using a Gateway



Gateway is a generic term for any device or software code used to join **two dissimilar** networks by converting data sent from one network into a format compatible to the receiving network. A Gateway can be implemented completely in software, completely in hardware or as a combination of both.

# Using a Router



Most common Gateway is a Router. It is an electronic device that typically joins a home LAN to the Internet's WAN and filters transmissions between them.

The Router forwards messages destined for other networks (green), but keeps local messages (blue) within the network.