
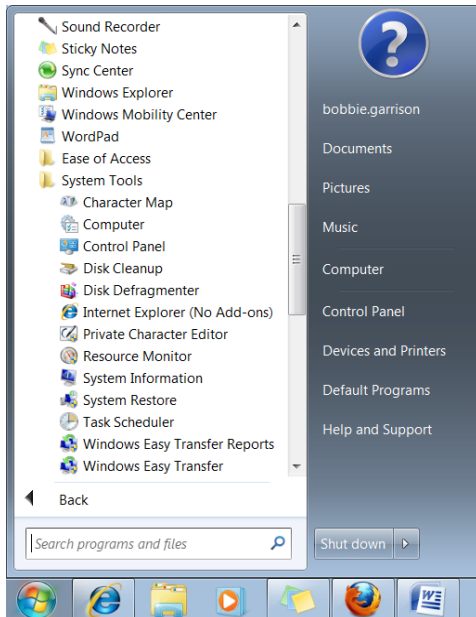


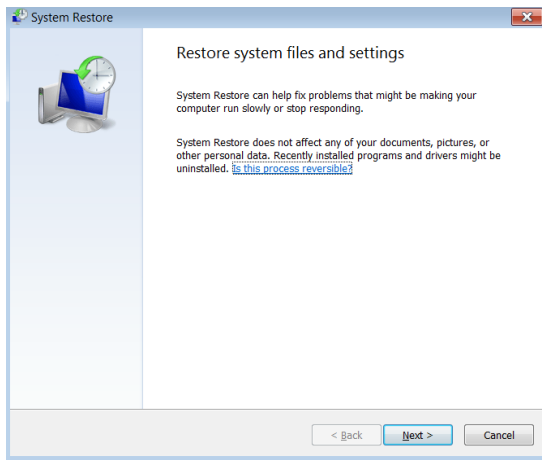


Restore System to Earlier Settings

1. Click on the Start Menu 
2. Click on the Accessories Folder in All Programs
3. Click on System Tools
4. Click on System Restore

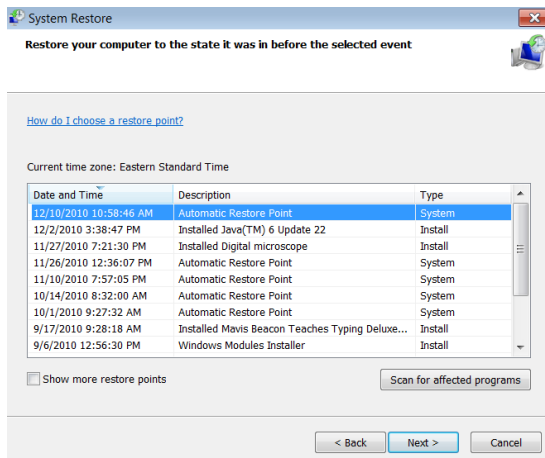


5. Click on the Next button

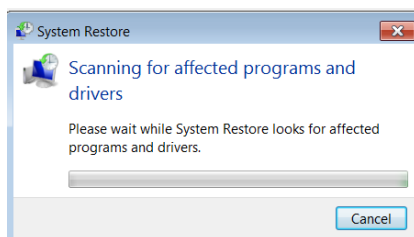




6. Select an event to choose the restore date
7. Click on Scan for affected programs if needed
8. If you do not want to Scan for affected programs:
 - a. Click on next
 - b. Go to Step 12 to Confirm Restore point



9. System Restore will look for affected programs and drivers.

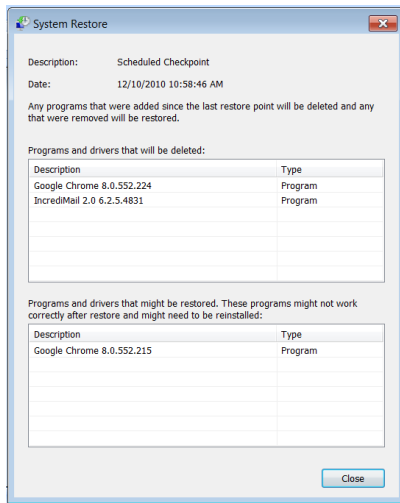




10. This window tells you:

- a. Which programs and drivers will be deleted
- b. Which programs and drives may be restored-these programs may not work correctly and may need to be reinstalled

11. Click close



12. Confirm your restore point

13. Click on Finish

