



System Restore

Creating a system restore is a useful tool that will enable you to return your computer to settings from an earlier time. When you restore your computer to an earlier time, you will lose any data saved after that date. If you have to do this, you will want to make backups of any data on to a removable storage device after that date to eliminate having to enter data again.

This is a relatively easy way to remove some problems from your computer when it is not working correctly. It is not the cure-all for viruses and such, but will help when you have added software that conflicts with other software, too many photos or videos, or someone else used your computer and you don't know what they did when the computer started to act up.

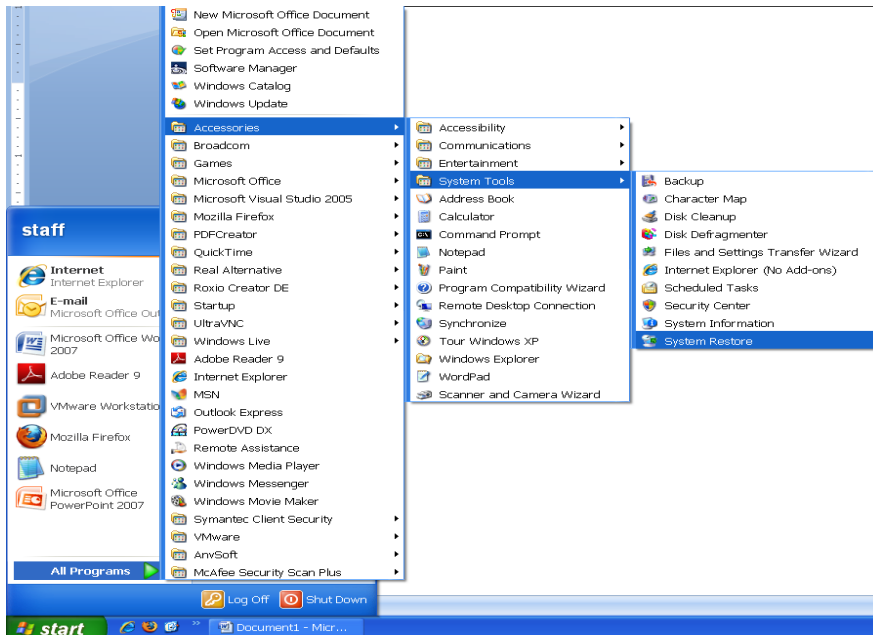
Steps to System Restore

1. Click on the Start Menu button

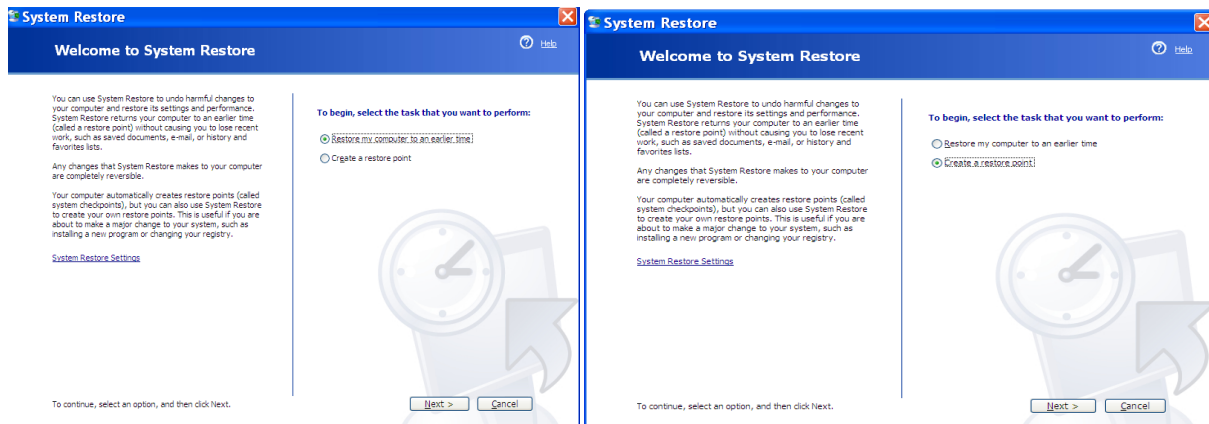




2. Point to All Programs
3. On the next menu, point to Accessories
4. Point to System Tools
5. Click on System Restore

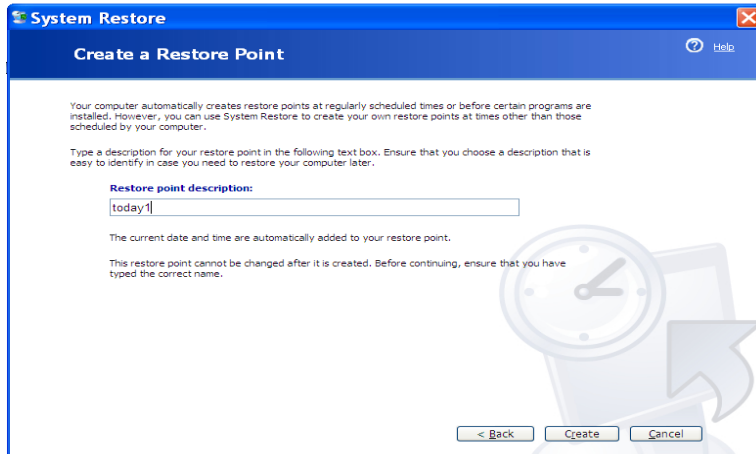


6. To begin, select the task that you want to perform
 - Restore my computer to an earlier time - this will have options when you have previously restored your computer that you can refer at another time
 - Create a restore date – you will create the current date with this option
7. Make your choice and click on the Next button








8. Type a name in the Restore Point Description box
9. Click on the Create button



10. Restore Point Created window will open displaying:

-  Date created
-  Time
-  Name of restore point

