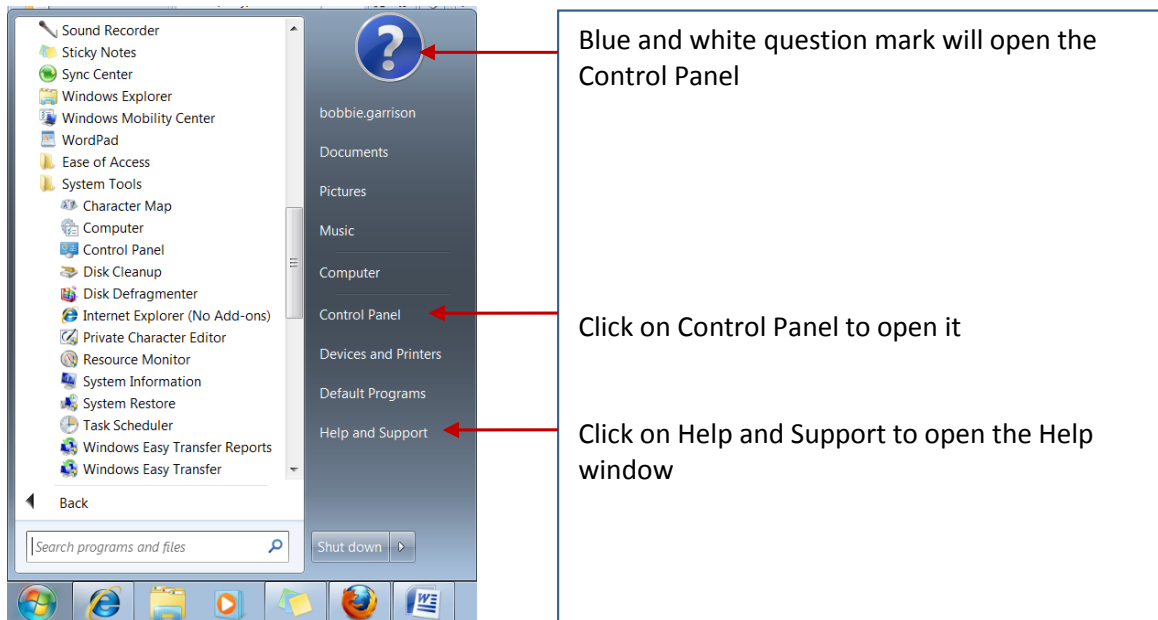


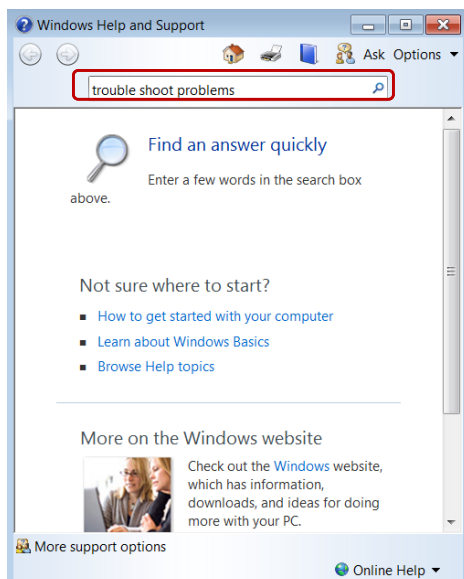


Trouble Shooting Problems

1. Click on the Start Button 
2. Click on the Help and Support option to get the Help Window

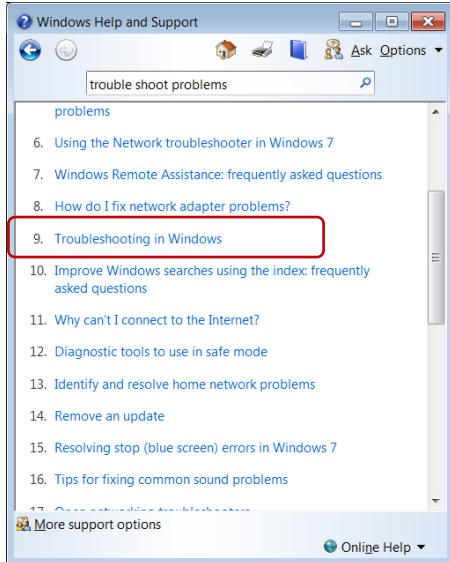


3. Type **trouble shooting problems** in the search box

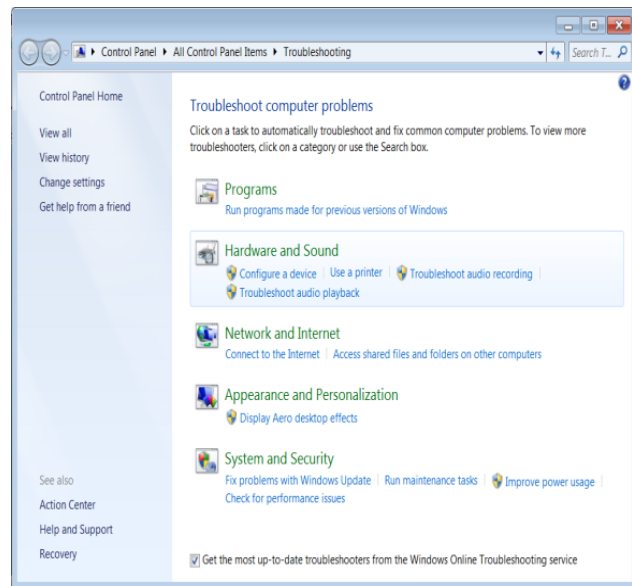
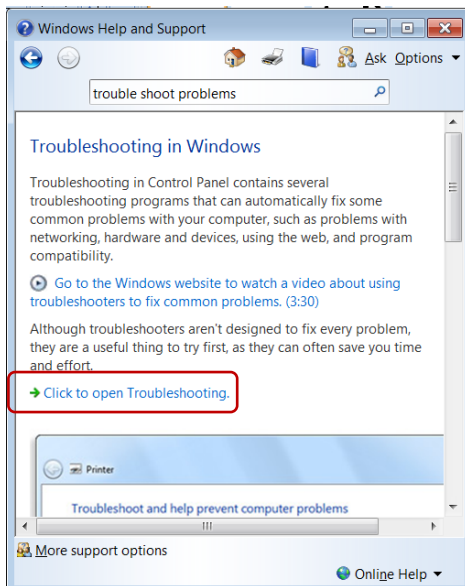




4. There a list will be generated with various categories.
5. Click on the category that best fits your need



6. A description and steps are shown for you to follow to fix your problem



7. There may also be a link **Click to open Troubleshooting**. This will open the Control Panel.
 - a. Here you can click on a task to automatically troubleshoot and fix common problems
 - b. You can also get this window in the Start Menu by clicking on the Control Panel and navigate to the Troubleshooting option.