

Control Panel

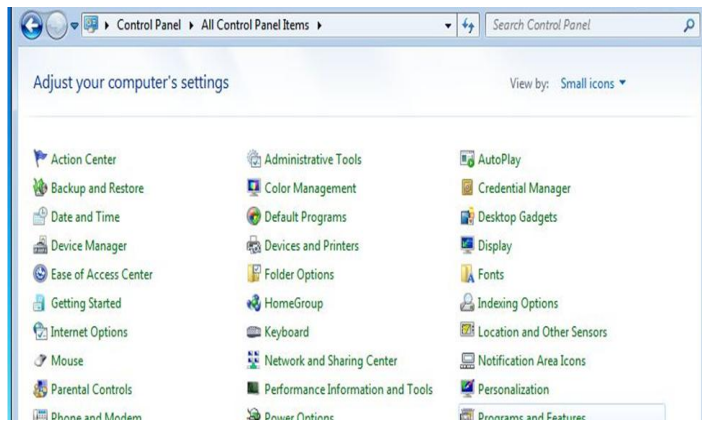


Monroe County Library System

Tel. (734) 241-5770 | traininglab@monroe.lib.mi.us

Windows 7

Control Panel Icon & Category View



Small and Large Icon views list all settings options individually.

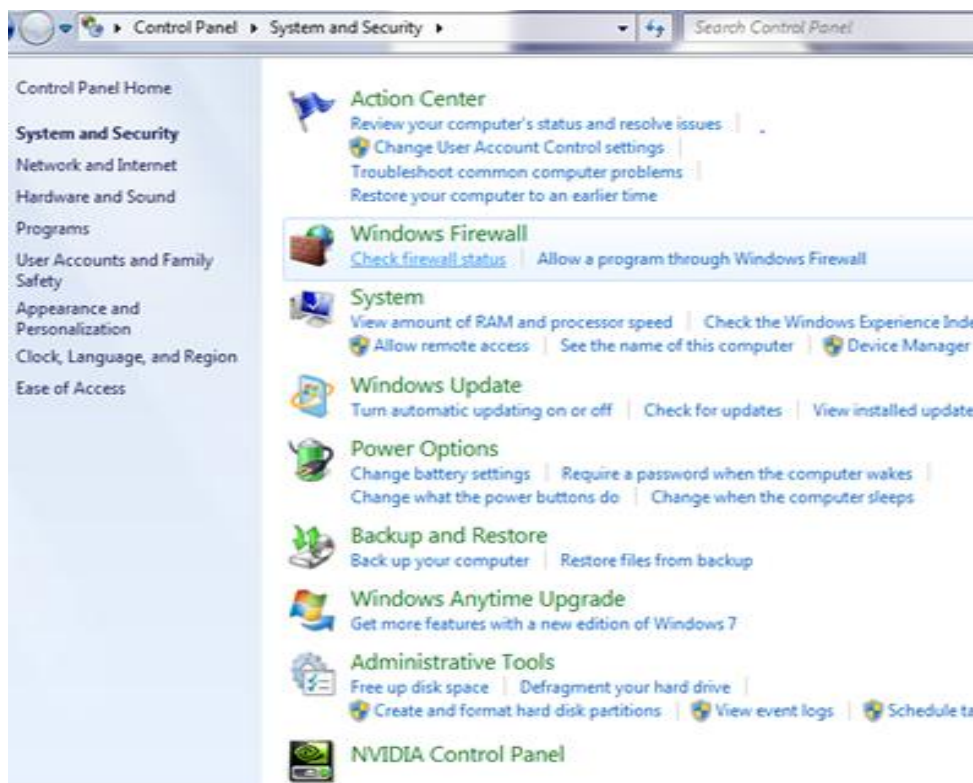
This is a more detailed view of options. *(Partial list displayed)*

Click on an option to view and make changes.





Category is a less detailed view. All options are available by opening the category links *(blue text in the window)*.

System and Security Window



Open Control Panel

1. Click on Start button  at the bottom left corner of screen.

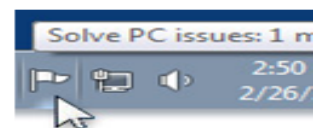
2. Click on  to open the Control Panel Window.

TIP: Click on links for more information. By doing this you will advance your understanding of how to use the Control Panel and its many options

Action Center



- Shows security status
- Set up computer backup
- Troubleshoot problems
- Restore computer to an earlier time
- Contains messages about security that need your attention.
- A flag will show on the notification area on the right end of the task bar, by the clock. When you point to the flag icon, a screen tip will show you how many messages. Click on it for details.
- A red flag designates the issue is important.
- Problem is listed and a link to view the solution is next to it.



System Information

Control Panel Home

- Device Manager
- Remote settings
- System protection
- Advanced system settings

View basic information about your computer

Windows edition

Windows 7 Professional
Copyright © 2009 Microsoft Corporation. All rights reserved.
[Get more features with a new edition of Windows 7](#)

System

Manufacturer: Dell
Model: Vostro 3500
Rating: **4.9** [Windows Experience Index](#)
Processor: Intel(R) Core(TM) i5 CPU M 430 @ 2.27GHz 2.26 GHz
Installed memory (RAM): 4.00 GB (2.99 GB usable)
System type: 32-bit Operating System
Pen and Touch: No Pen or Touch Input is available for this Display

Dell support

Website: [Online support](#)

Computer name, domain, and workgroup settings

Computer name: TLJohnSmith [Change settings](#)
Full computer name: TLJohnSmithLead
Computer description:
Workgroup: DAUME

Windows activation

Windows is activated
Product ID: 00371-OEM-8992671-00524

See also

- Action Center
- Windows Update
- Performance Information and Tools

System Information is a detailed statistic list of your computer capabilities.

Print this page by clicking on the Start Menu on the task bar, click on:

- All Programs
- Accessories
- System Tools
- System Information
- Click File Menu
- Click on Print

TIP: Printing is useful if you need help when purchasing new software and hardware for your computer.

Dell Support online is accessed by clicking on the [Online Support](#) link.

Windows uses these settings to identify your computer while online. If you are on a network, this identifies each computer while in use.

Windows activation is used to validate your software if problems arise from counterfeit software or system changes. Contacting Microsoft will enable problems to be corrected.

Rate and Improve Computer Performance

Control Panel Home

- Adjust visual effects
- Adjust indexing options
- Adjust power settings
- Open disk cleanup
- Advanced tools

Rate and improve your computer's performance

The Windows Experience Index assesses key system components on a scale of 1.0 to 7.9.

Component	What is rated	Subscore	Base score
Processor:	Calculations per second	6.4	4.9 Determined by lowest subscore
Memory (RAM):	Memory operations per second	7.1	
Graphics:	Desktop performance for Windows Aero	4.9	
Gaming graphics:	3D business and gaming graphics performance	6.1	
Primary hard disk:	Disk data transfer rate	5.9	

[What do these numbers mean?](#) [View and print detailed performance and system information](#)

[Tips for improving your computer's performance.](#)

[Learn more about scores and software online](#) [View ways to increase your score](#)

Your scores are current
 Last update: 7/2/2010 12:13:08 PM [Re-run the assessment](#)

- ▣ Hardware and software components are rated by capability
- ▣ Subscore for each component of the computer system is listed individually
- ▣ The Base score is the average of all scores
- ▣ Adjustment options and disk maintenance are listed at the left of screen in the blue frame
- ▣ Help options contain detailed steps to perform a task
- ▣ View and Print system information
- ▣ View how to increase your score
- ▣ Re-run the assessment

Network and Internet



Network and Internet

View network status and tasks

Choose homegroup and sharing options

- ▣ View network information and setup
- ▣ Change settings
- ▣ Connect to a network
- ▣ Choose home group and sharing options
- ▣ Troubleshoot problems
- ▣ Internet Options for security and privacy settings
- ▣ View and update Firewall settings

Hardware and Sound



Hardware and Sound

View devices and printers

Add a device

- ▣ Displays, mouse, printers and faxes and other devices connected to computer
- ▣ Enables you to add a device and change settings for devices

Programs



Programs

Uninstall a program

- ▣ Uninstall, change or repair a program

User Accounts



User Accounts and Family Safety

Add or remove user accounts

Set up parental controls for any user

- ▣ Create user accounts
- ▣ Create or edit passwords for accounts
- ▣ Add or change account picture
- ▣ Change account type
 - Administrative
 - Guest
- ▣ Change account control settings
 - Account change notifications
- ▣ Set up parental controls

Appearance and Personalization



Appearance and Personalization

Change the theme

Change desktop background

Adjust screen resolution

- ▣ Change desktop background with default photos or your own uploaded photos
- ▣ Change Windows colors, font size,
- ▣ Change playback, recording, sounds and communications options
- ▣ Change screensaver
- ▣ Adjust screen resolution

Clock, Language and Region



Clock, Language, and Region

Change keyboards or other input methods

- ▣ Change date and time format
- ▣ Time zone location
- ▣ Keyboard options
 - On or off screen
 - Language bar
 - Advanced key settings
- ▣ Administrative settings

Ease of Access



Ease of Access

Let Windows suggest settings

Optimize visual display

- ▣ Visual impairment settings
- ▣ Dexterity settings
- ▣ Hearing settings
- ▣ Speech settings
- ▣ Reasoning settings
- ▣ Optimal visual display settings